



# Revived Replacement Elements for VISLON®



Revived renewal  
components help keep  
YKK® zippers running longer.

**YKK™**

Little Parts. Big Difference. >>>>

# product information

Revived replacement elements for VISLON® zippers allows for replacement of damaged elements that would otherwise require a full zipper replacement. Enables repair shops, retail stores, and potentially customers to easily replace damaged or missing elements, contributing to a longer garment lifecycle.



		Classification		
		Close	Open	Two-way
Size/Chain Code	5VS C5(SILVER)	OK*	OK	OK
	5VS V3(BLACK SILVER)			

\* Set plate currently not compatible with the bottom stop shape. Therefore, replacing elements near the bottom stop is not available.

## revived replacement element kit for VISLON®

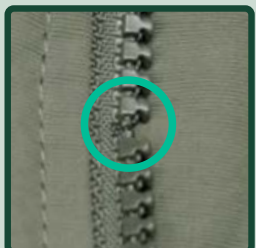


\* Plier connection joint is coated with oil to improve movement, please be careful not to stain fabric.



# before installation

### check tape & cord condition



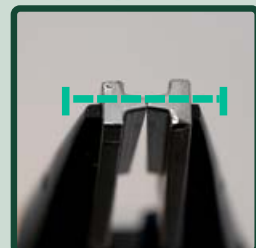
Make sure tape or cord is not damaged.

### Check the plier setting



Make sure the plier opening is set to the wide position.

### Verify condition of pliers



Close the plier and make sure the jaws align properly.

### check set plate condition



Open and close set plate to confirm operation.

# single element installation

01



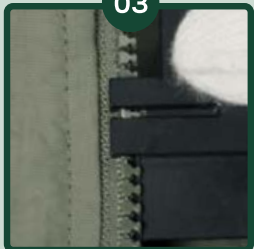
Set replacement element onto zipper tape.

02



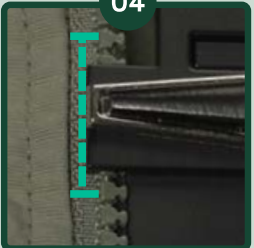
Align replacement element in the groove of the bottom set plate.

03



Close the set plate.

04



Align the plier jaw along the groove of the set plate.

05



Crimp plier firmly to attach the replacement element.

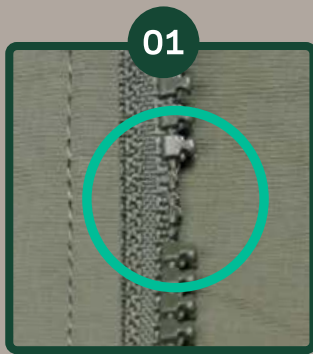
06



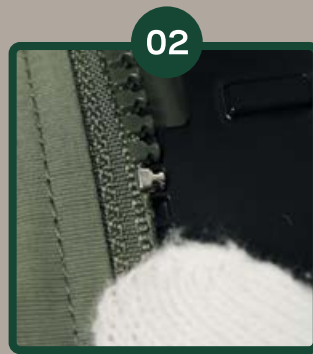
Finished!

● We recommend wearing gloves to avoid injury.

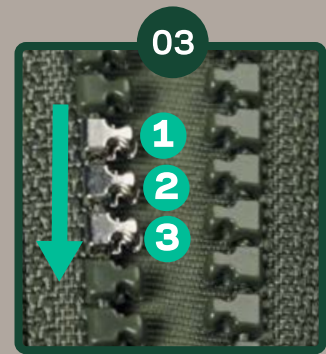
# multiple elements installation



Follow same process as single element installation.

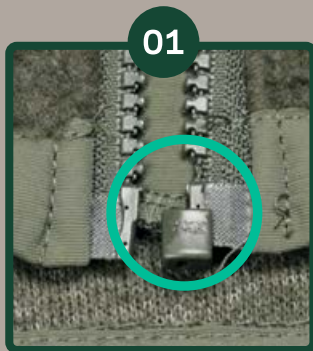


Attach first replacement element next to an undamaged VISLON® element.

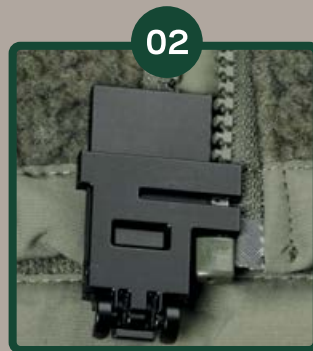


Attach additional replacement elements, one-by-one, next to the previously installed replacement element.

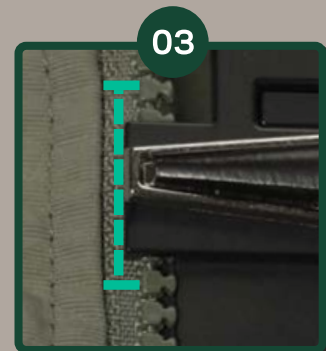
# element installation near open parts



Follow same process as single element installation.



Align the set plate while avoiding contact with the open parts.



Close the set plate and proceed with replacement element installation.

- Revived replacement elements are not suitable for repairing infant or children's apparel or sleepwear, because there is a potential risk for the replacement element and/or slider to come off the zipper from the damaged area.
- To prevent accidental ingestion, keep the revived elements out of reach of children.
- YKK is not responsible for any defects that may occur when replacing elements or changes in quality or performance that may occur due to element replacement. Please replace the element at your own risk.



watch by video



 YKK  
DIGITAL  
SHOWROOM.

Experience our story.™

"YKK", "YKK Little Parts. Big Difference.", "VISLON", "YKK DIGITAL SHOWROOM" and "Experience our story." are registered trademarks or trademarks of YKK CORPORATION in Japan and other countries/regions.

 YKK CORPORATION

©2024 YKK CORPORATION  
Sep. 2024